

# Genius Expanse & Vantage

a whole new way to porch

[www.BlaineDistribution.com](http://www.BlaineDistribution.com)



- Available in standard sizes or custom made
- **Retractable screen technology:** Provide protection from bugs and other outside elements while enjoying top and bottom ventilation
- Dual sashes made of 3/16" tempered glass
- **Easy to install:** Requires a handful of screws and minimal supplies
- **Deters moisture** while functioning as an extension of the outdoors — appropriate only for non-heated, non-air conditioned spaces

**BLAINE**  
DISTRIBUTION LLC

**Genius**  
Retractable Screen Systems





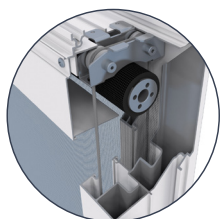
# expanse™

## a whole new way to porch.™

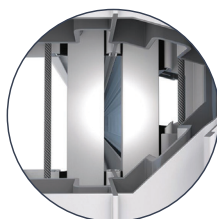
Be a part of one of the biggest trends in home improvement with a new and exciting kind of porch project — the first of its kind!

The innovative Expanse™ retractable screen windows transform outdoor living so that the brilliance of nature takes center stage.

- **Retractable screen technology:** Provide protection from bugs and other outside elements while enjoying top and bottom ventilation
- **Easy to install:** Requires a handful of screws and minimal supplies
- **Deters moisture** while functioning as an extension of the outdoors — appropriate only for non-heated, non-air conditioned spaces



Quad pulley balance system for smooth and reliable operation



Stainless steel aircraft cable supports the counterbalanced sashes for easy ventilation



Dual sashes with weatherstripping and interlocking rail create a tight seal



Sash lock and 3/16" tempered glass for added protection



White

Brown

Sandstone

### GnX50

PRODUCT ID	SIZE (WIDTH X HEIGHT)	COLOR	PRICE PER UNIT
GNX50034472	44.5" x 72"	White	<b>\$ 720.00</b>
GNX50034484	44.5" x 84"	White	<b>\$ 800.00</b>
GNX50035672	56.5" x 72"	White	<b>\$ 800.00</b>
GNX50035684	56.5" x 84"	White	<b>\$ 870.00</b>
GNX50036872	68.5" x 72"	White	<b>\$ 880.00</b>
GNX50036884	68.5" x 84"	White	<b>\$ 950.00</b>

### CUSTOM SIZES

Rough opening widths from 24" to 72" Rough opening heights from 30" to 96"	<b>\$ 7.40 UI</b>
---	-------------------

Once placed, custom orders cannot be cancelled.

For accurate pricing estimate using united inches, round up to the nearest inch.

Expanse™ retractable porch and patio panels are designed for areas that function as an extension of the outdoors and are appropriate only for non-heated, non-air conditioned spaces. Expanse™ panels are designed to deter some, but not all moisture. Classified for use in AAMA/NPEA/NSA 2100-12 Category II sunrooms. Refer to your local building code requirements specific to your location. ©2017 Genius Retractable Screen Systems



# Ordering Guide

## All you need is a weekend.

Once you've decided that your porch is ready for an Expanse™ transformation, let us know how many panels you need and what your rough opening sizes are. The only tools you're going to need are a tape measure, screwdriver and shims. Let's get started!

### 1 Measure width

Measure between the jambs at three points: top, middle and bottom of the opening. Measure from the surface of the jambs where the panel will be mounted. Use the smallest of these three measurements to order the panel.

### 2 Measure height

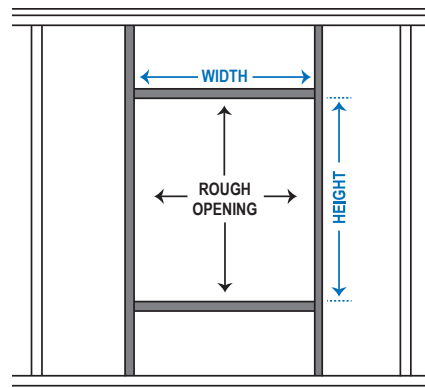
Measure from the high point of the sill of your opening to the top of the opening. Make three measurements: one at the left side, one at the center and one at the right side. Use the smallest of these three height measurements to order the panel.

### 3 Measure depth

There must be at least 2-1/2" of opening depth between the inside opening trim and the outside to accommodate the depth of the porch panel.

### 4 Order your panels

When placing your order, provide rough opening sizes. For manufacturing purposes, the actual panel size will be 1/2" smaller in width and height than the ordered size.



#### WINDOW STANDARD ROUGH OPENING SIZES

44-1/2" x 72"      44-1/2" x 84"  
56-1/2" x 72"      56-1/2" x 84"  
68-1/2" x 72"      68-1/2" x 84"

#### WINDOW CUSTOM RANGE

Rough opening widths  
from 24" to 72"  
Rough opening heights  
from 30" to 96"

#### STORM DOOR STANDARD SIZES

32" x 81"  
36" x 81"


#### STORM DOOR CUSTOM RANGE FULLVIEW ONLY

Regular Custom: 30-40" wide x 70-86" high  
Oversize Custom: 32-40" wide x 86 1/8-97" high

White

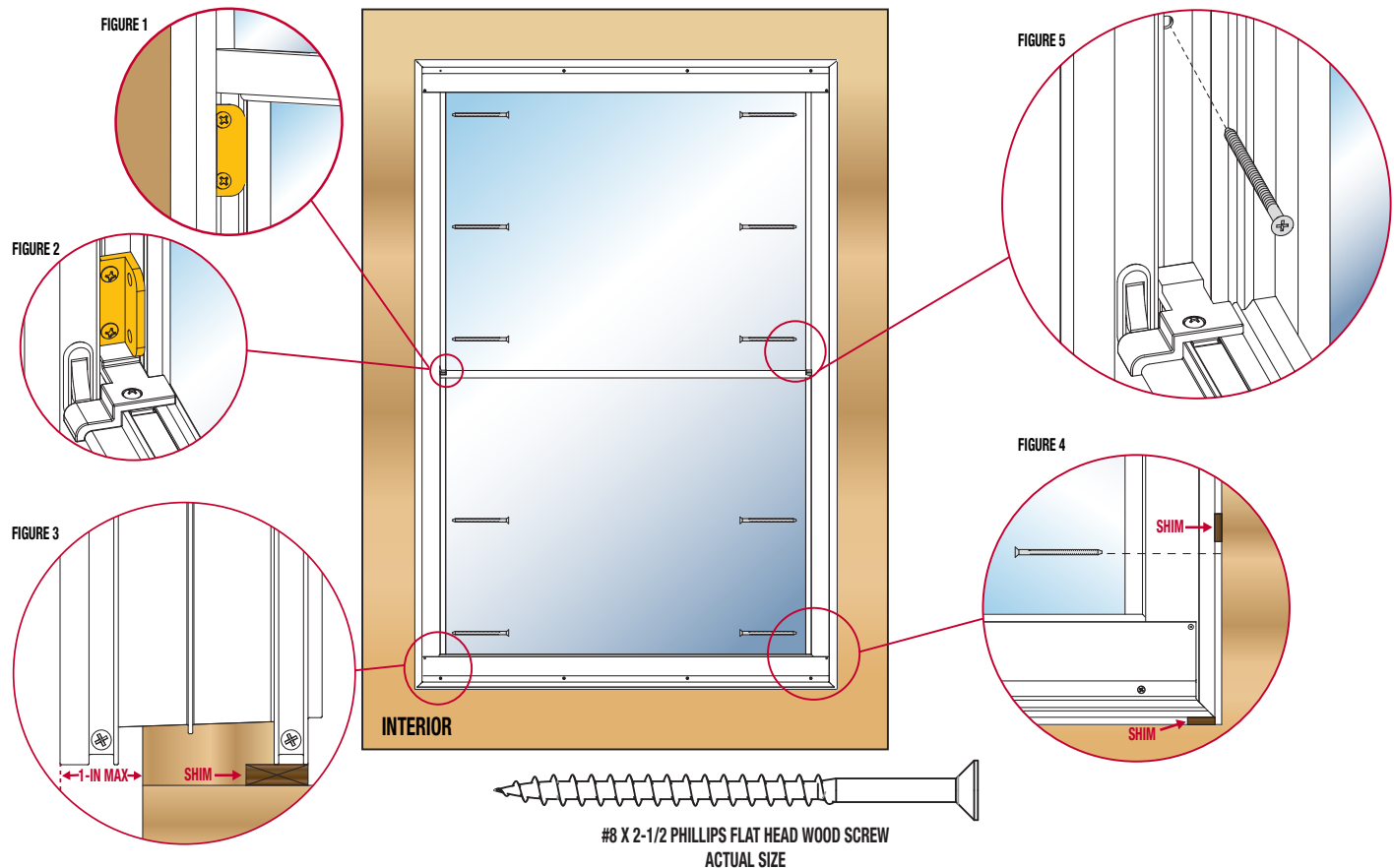
Sandstone

Brown

	Rough Opening Size		United Inches* (= width + height)
	Width	Height	
<b>Example</b>	<b>38-1/2"</b>	<b>52"</b>	<b>91 UI</b>
Window #1			
Window #2			
Window #3			
Window #4			
Window #5			
Window #6			
	Opening Size Width	Opening Size Height	Color
Door #1			
Door #2			
Hardware Finish			

# Easy installation.

**CAUTION:** to prevent damage to the panels, do not turn it upside down.  
Two people are recommended for installation. Use safe lifting techniques.



With the panel standing upright, remove and discard the three metal shipping clips. Two are located under the bottom of the top sash on the outside of the panel. One is on the inside on the top of the bottom sash, near the sash lock. (Figures 1 & 2)

The sash will now move freely. Remove the foam shipping block from under the bottom sash.

Open and close the sashes to confirm they operate properly. If they don't, looking from the top down, check that the cables are engaged on the pulleys. If either of the cables are not engaged, reset the cable in the channel on both pulleys.

Close the sash and engage the sash lock before proceeding.

To ensure the panel is secured properly, **DO NOT** overhang the panel more than 1-in beyond the outside face of the framing. (Figure 3) Make sure the front face of the panel is flush with or extends past the outermost surface of any framework, trimming, or any outside siding. This will help ensure water drains on the outside surfaces and does not weep inside the porch. For an added level of water protection, use flexible flashing at the sill, following the flashing manufacturer's instructions.

Using shims within 1-in of each screw hole along both jambs and under the corners of the sill, center the panel in the opening both vertically and horizontally. Shim to square and plumb. (Figure 4)

Install the provided screws in the pre-punched holes in the sides of the jambs of the top half of the panel. Move the sashes

to expose the pre-punched holes on the bottom half of the panel and install the provided screws through the exposed holes in the sides of the jambs. To avoid bowing, **DO NOT** over tighten the screws. (Figure 5)

## FINISHING TOUCHES

From the exterior, create a continuous air seal by filling the gap between the framing and the panel with backer rod and sealant. For proper water drainage, the exterior trim should not extend past the face of the panel.

If desired, repeat on the interior using low expansion polyurethane foam or backer rod and sealant. Apply trim as desired.

For questions and assistance, see [www.geniusscreens.com](http://www.geniusscreens.com)





## Vantage Storm Door

### Live better, outside.

- **Vantage Retractable Screen:** Disappears into top cassette for a clear view; easy one-hand operation
- **Maintenance-free:** Durable 1-7/8" thick aluminum frame
- **Two closer system:** bottom closer features Hold Open button that holds storm door open with tap of toe; top closer adds dependable opening and closing
- **Easy to install:** Simple Installation allows more time for you

Select a Genius Storm Door to complete your new Expanse™ porch project.

## 1 Choose your door 2 Choose your handle



Fullview Clear

Midview

- Matching interior and exterior handles with built-in deadbolt. Sold separately.

**QuickFit™**  
HANDLE SET



Brushed Nickel Brass

Aged Bronze

Antique Brass

White

Sandstone

Brown

1. DOOR		SIZE	White	Sandstone	Brown
Fullview	GEN50FV	32" x 81" 36" x 81"	\$ 380.00	392.00	398.00
	REGULAR CUSTOM*	W: 30" – 40" H: 70" – 86"	\$ 600.00	620.00	660.00
	OVERSIZE CUSTOM*	W: 32" – 40" H: 86-1/8 – 97"	\$ 700.00	720.00	760.00
Midview	GEN50MV	32" x 81" 36" x 81"	\$ 398.00	410.00	416.00

\* CUSTOM DOORS: Please allow 3–5 weeks for delivery. Once placed, custom orders can not be cancelled.

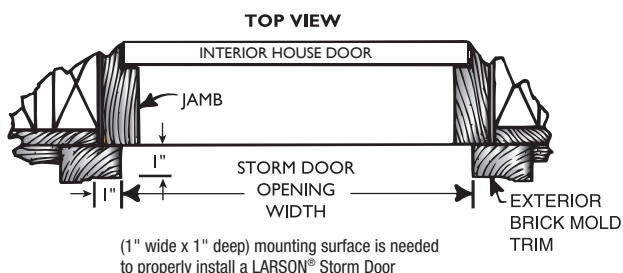
2. HANDLE	
Brushed Nickel 20297817	SINGLE EACH \$ 48.00
Brass 20297807	
Aged Bronze 20297857	3-PACK \$ 114.00
Antique Brass 20297820	
White 20297803	
Sandstone 20297809	
Brown 20297804	

## FOR ALL STORM DOORS

1. State model number
2. State color
3. State size required—width x height or opening size for customs
4. All standard and most custom size doors are REVERSA-HINGE™

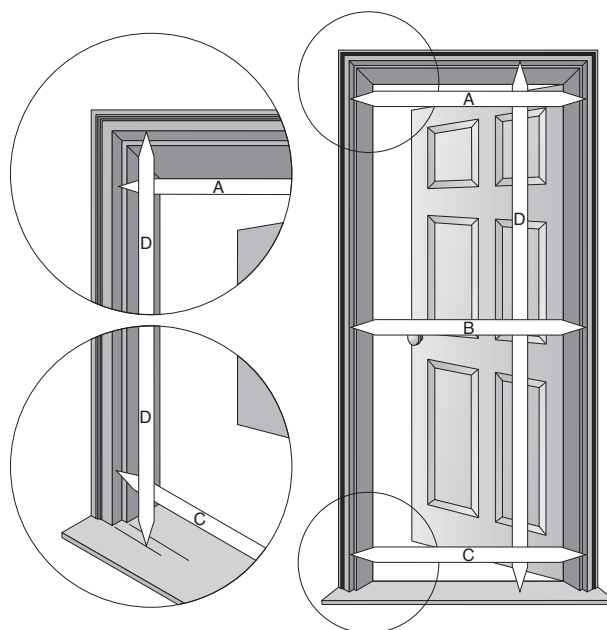
## How to measure for your storm door.

Referring to the following diagrams below and at right, measure the opening width (horizontally) as shown. Take three measurements, one across the top, middle and bottom of the door. Record the narrowest dimension.



### Mark Measurements

- A \_\_\_\_\_ (width)
- B \_\_\_\_\_ (width)
- C \_\_\_\_\_ (width)
- D \_\_\_\_\_ (height)



## Doorway Opening Size Guide

### Fits These Doorway Openings:

DOOR OPENING	MIN. WIDTH	MAX. WIDTH	MIN. HEIGHT	MAX. HEIGHT
32" x 81"	31-7/8"	32-3/8"	80"	81"
36" x 81"	35-7/8"	36-3/8"		

Additional sizes available in custom. Allow 3–5 weeks for custom orders. Once placed, custom orders cannot be cancelled.

**NOTE:** On some installations a shim may be needed behind the Hinge-Side Z-Bar.  
Standard size availability varies by model.

### © Genius Retractable Screen Systems

Upon receipt of goods ordered, please examine for proper models, sizes and colors. Genius will replace products if a manufacturing or shipment error is made. Genius will not be liable for any installation charges or any other costs incurred. Genius Retractable Screen Systems reserves the right to alter or discontinue any model, specifications, warranty or price without notice.



Homeowner Helpline: 1-866-523-9511

## How to Install a Vantage Storm Door



**1**

Insert Hanging Screw



**2**

Install Hinge to Door



**3**

Hang Door on Home

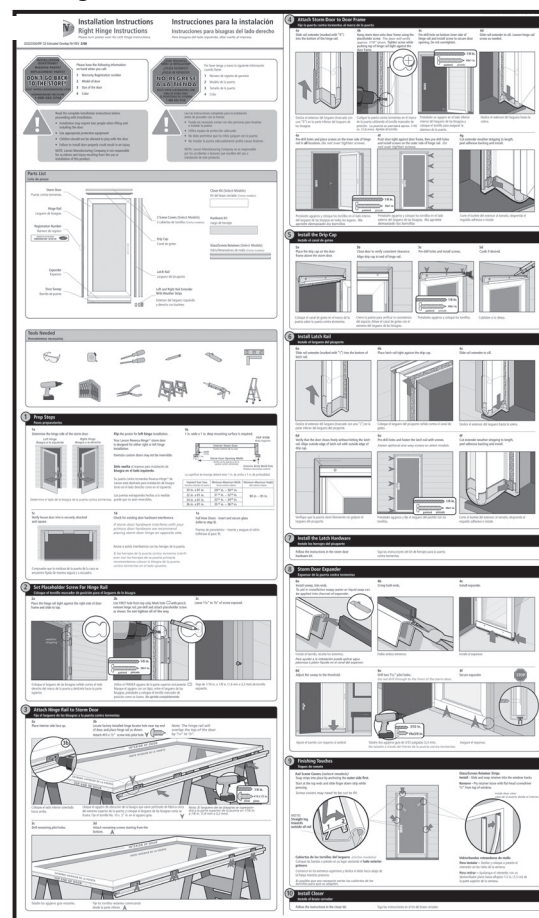


**4**

Adjust Height

Install hardware, expander and enjoy.

### Easy-to-follow Instructions







## Our simple, straightforward warranty

Genius Retractable Screen Systems™ warrants the Expanse™ frame to be free from defects in manufacturing, materials, paint adhesion, or workmanship, under normal use, for a period of ten years from the date of original retail purchase.

**RETRACTABLE SCREEN:** Genius Retractable Screen Systems™ warrants the retractable screen to be free from defects in manufacturing, materials, under normal use, and workmanship for a period of five years from the date of original retail purchase.

**COMPONENTS:** Genius Retractable Screen Systems™ warrants the components, including glass sash, to be free from defects in manufacturing, materials, under normal use, and workmanship for a period of one year from the date of original retail purchase. Upon written proof of purchase Genius Retractable Screen Systems™ will provide a replacement component.

### Warranty Limitations:

- Warranty only applies to original homeowners of owner-occupied residential properties and covers manufacturer's defects.
- Modification of product will void warranty.
- Damage or breakage of the screen/glass sash is not covered under warranty.
- Acts of nature including wind damage and flooding are not covered under warranty.
- Damages resulting from improper installation or misuse are not covered under warranty.
- Labor cost and reinstallation fees are not covered under warranty.
- Certain coastal applications, chemicals or airborne pollutants such as salt or acid rain are not covered under warranty.
- Remedy is limited to the repair and replacement of the defective product.

## General care and maintenance

Wash glass using household glass cleaner or a warm water/mild detergent mixture and a soft cloth or paper towel. A solution of four parts water/one part vinegar may also be used.

For general cleaning of the frame, we suggest using a liquid soap and water solution, Formula 409®, Windex®, Fantastik®, or similar product. Always follow manufacturer's directions. Using a soft, clean cloth, apply cleaner to a small portion of the surface. After cleaning, rinse the surface completely. Never use acetone or products containing esters, ethers, ketones, aromatic and chlorinated hydrocarbons.

## Troubleshooting solutions

Sashes do not operate: Ensure the shipping clips have been removed. Release the sash lock on the left hand side of the panel.

Sashes do not operate smoothly: Ensure the unit is level and plumb in the opening.

Screen does not retract: Pull down on the screen a few inches and then release to reset the tension

Screen comes out of the track: To reset the screen, close the sashes completely. Slowly open the sashes allowing the screen to reset in the track. For questions and assistance, visit [www.geniusscreens.com](http://www.geniusscreens.com)



## STORM DOOR WARRANTY PROGRAM

Genius Retractable Screen Systems, referred to below as the COMPANY, offers the following limited warranty.

### LIMITED WARRANTY

1. This warranty applies to the original purchaser of all owner-occupied homes provided the door has not been cut or altered in any way. In order to obtain performance under this warranty the owner must notify Genius of defect with a **proof of purchase**.
2. Each series is provided with a warranty for a specific amount of time (refer to the Door Series/ Warranty Guide page to determine the warranty for your door). The company also reserves the right to repair or replace defective components as needed, including a processing and handling fee.
3. This is a do-it-yourself project. Reinstallation is up to the homeowner. The COMPANY does not provide a reinstallation credit.
4. There is no informal dispute settlement procedure available which is offered by the warranty but you are required to resort to the procedure outlined in this limited warranty before resorting to any legal remedies in a court of law.
5. The legal remedies available to you are as follows:
  - a. Customer protection agencies available in the respective states.
  - b. General courts in each state.
6. The COMPANY will perform the obligations under this limited warranty during the normal working hours of its dealers and distributors.
7. The obligations under this warranty will be completed within ninety (90) days after notice of a defect or malfunction has been furnished.

#### Storm Door Warranty Limitations:

- Warranty only applies to original homeowners of owner-occupied residential properties and covers manufacturer's defects.
- Modification of door will void warranty.
- Damage or breakage to the screen/glass insert is not covered under warranty.
- Wind damage is not covered under warranty.
- Labor cost, reinstallation fees are not covered under warranty.
- Water damage due to lack of rain diversion or structural overhang is not covered under warranty.
- Certain coastal applications
- Your exclusive remedy is limited to the repair and replacement of the defective product.

**For warranty or manufacturing defects please  
call: 1-866-523-9511**

The following information is necessary to process your warranty:  
1. Registration Number  
2. Proof of Purchase

## WARRANTY DETAIL

Applies to original purchaser of door only; covers manufacturer's defects only.

**Heavy Duty Aluminum**

**Limited Lifetime Warranty**

**DOOR FRAME AND HINGES:** Genius warrants the door frame and mounting rails to be free from defects in manufacturing, materials, paint adhesion, or workmanship, under normal use, for the period stated above.

**COMPONENTS:** Genius warrants the components of the door including hardware, window sash, screen frame, retainer strips, closers, locksets (mechanical operation and finish), to be free from defects in manufacturing, materials, tarnishing and workmanship for a period of one year from the date of original retail purchase.

**RETRACTABLE SCREEN:** Genius warrants the retractable screen of its ScreenAway doors to be free from defects in manufacturing, materials and workmanship for a period of five years from the date of original retail purchase.

In the event a component fails as a result of a defect in manufacturing, materials or workmanship within the limited warranty period specified above, and upon written proof of purchase, Genius, at its option, will provide a replacement component as long as the original consumer purchaser owns the home in which the door was initially installed. Installation is not included.

Warranty claims made one (1) year after purchase are subject to a shipping and processing fee.

### **STORM DOOR WARRANTY LIMITATIONS:**

- Warranty only applies to original homeowners of owner-occupied residential properties and covers manufacturer's defects.
- Modification of door will void warranty.
- Damage or breakage to the screen/glass insert is not covered under warranty.
- Acts of nature including wind damage and flooding are not covered under warranty.
- Damages resulting from improper installation or misuse are not covered under the warranty.
- Labor cost, reinstallation fees are not covered under warranty.
- Water damage due to lack of rain diversion or structural overhang is not covered under warranty.
- Certain coastal applications, chemicals or airborne pollutants such as salt or acid rain are not covered under warranty.
- Your exclusive remedy is limited to the repair and replacement of the defective product.

## WARRANTY REPLACEMENTS:

**CUSTOMER SERVICE HOTLINE: 1-866-523-9511**

Please call for detailed warranty information related to your model. Proof of purchase is required to obtain warranty replacements. When placing the call, please have the registration number available (located on hinge-side of door).

Genius reserves the right to alter or discontinue any model, specification, warranty or price without notice.



**BLAINE**  
DISTRIBUTION LLC

**Genius<sup>®</sup>**  
Retractable Screen Systems